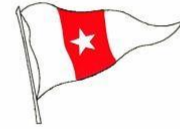


Hempstead Harbour Club PHRF Races
Glen Cove, NY
SAILING INSTRUCTIONS - 2024



1 RULES

The regatta will be governed by the rules as defined in *The Racing Rules of Sailing*.

2 NOTICES TO COMPETITORS

Notices to competitors will be posted on the official notice board located on the club website.

3 CHANGES TO SAILING INSTRUCTIONS

Changes to the sailing instructions will be made prior to 9:00 PM the day before and will be posted on the club website.

4 SIGNALS MADE ASHORE

Sound Signals may be made ashore from the west porch to postpone-(2 horns) or cancel-(3 horns) races. One horn shall be sounded to indicate postponement has ended and the warning signal will be no less than 30 minutes after.

5 SCHEDULE OF RACES AND STARTING TIMES

The dates and times of scheduled races will be as posted on the club website. The schedule will also show which races will utilize a Pursuit Start.

6 RACING AREA

The racing area will be in the vicinity of the marks shown in Attachment A to the Sailing Instructions.

7 COURSES

Pursuit Races - the courses will be displayed by the entrance to the main dock to be read by competitors as they proceed to the launch. Courses may be changed or set via radio PRIOR to the warning.

Non-Pursuit Races - the courses will be displayed on the race committee boat, located on permanent mooring west of club mooring field. Letters will be displayed vertically with the division number on top. A placard below the course will be Green with the letter S to mean leave marks to starboard, Red with the letter P to mean leave marks to Port. If a 2X is displayed on the Green or Red placard, the course is to be sailed twice around. In a twice around course, competitors must sail through the gate at the end of the first lap.

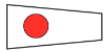
8 MARKS

Government marks and Hempstead Harbour Club Fixed marks as designated in Attachment A to the Sailing Instructions will be used. For distance races any government marks as designated by the race committee will be used. Fixed club marks are orange Jim buoys. The mooring ball and pennant of RC Boat's mooring shall be treated as part of committee boat.

9 STARTING AND FINISHING LINES, STARTING SYSTEM

For non-Pursuit races the starting and finishing lines will be between a white flag on RC Boat and an orange inflatable set by the race committee. Depending on how the pin is set, it may be left on a different side then the P or S above indicates. For Pursuit races the start/finish line will be between the mooring ball of Sunset and the nearest 5 MPH speed marker, unless a pin has been set.

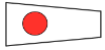
For **Non- Pursuit Races** a five-minute starting sequence shall be used as described in Rule 26.



5 minutes: Class Flag 1 raised

1 horn

Warning



4 minutes: P Flag raised

1 horn

Preparatory



1 minute: P Flag lowered

1 long horn

One Minute

0 minutes: Class Flag 1 lowered 1 horn

Start Division 1 & 2

For **Pursuit Races**: Horns will be accompanied with VHF CH 72 announcement. After the starting signal competitors will start at the predefined time after the starting signal according to their handicap. These will be published in a separate document by the regatta committee.

A competitor starting more than ten minutes after her start time shall be scored Did Not Start, DNS.

10 CHANGE OF COURSE

For non-Pursuit races, courses may be changed at a mark of the course or at the RC for 2nd lap of a (2X) with repetitive sounds of the horn and may or may not display Code Flag C. The course will be posted on the committee boat for the second lap or mark boat if changed at a mark. If course is changed it must be done before the first boat crosses the gate at the end of the first lap or rounds the mark where course being changed. Pursuit Race courses CAN NOT be changed after the start. This modifies Rule 33.



11 SHORTEN COURSE

Non-Pursuit courses may be shortened to finish at a mark of the course or to 1X on a 2x course by sounding two horns and may or may not display Code flag S. The course can be shortened at the RC boat at the end of the first lap of a 2X course. If course is shortened it must be signaled before first boat reaches the mark or crosses the gate at the end of the first lap. Pursuit Race courses CAN NOT be shortened. This modifies Rule 32.2



12 RECALLS

Individual Recalls: the Race Committee will endeavor to hail individual boats by loud hailer or on VHF radio CH 72. Failure to hear a hail or radio call does not relieve a boat of responsibility to start correctly. Failure of the Race Committee to hail will not be cause for redress. Code flag X may or may not be flown. This modifies Rule 29.1.



General Recall: The Race Committee will sound two horns and hail general recall over VHF radio CH 72. When the Race Committee deems appropriate, it will hoist the Preparatory Signal and sound one horn five minutes before the start. The First Repeater may or may not be flown. This modifies Rule 29.2.



13 TIME LIMIT

Club races will be three hours, for the first boat to finish. Boats failing to finish within 45 minutes after the first boat sails the course and finishes will be scored Did Not Finish without a hearing. This changes rules 35, A4 and A5.

14 PROTESTS

Protests shall be delivered to the Regatta Chairman, or his mailbox at the club, or emailed to him at HHCRregatta@gmail.com, no later than 2300 hours the day of the finish of the race or 2 hours after the finish, whichever is later. A list of protests received will be posted on the club website. Hearings will be held as soon as possible to be scheduled by the Regatta Chairman.



15 SCORING

The ratings carried on the YRA of LIS PHRF Certificate submitted or in the absence of YRA Certificate, a rating assigned by the club measurer, prior to the first race entered will be used for all races in the Champagne series and races used for Commodore's Trophy.

All yachts will race together with same course and start. They will be scored two ways. 1) As one Division for purposes of scoring Commodore's Trophy and Dorothy Quortrup race. 2) As two Divisions for each Trophy race and Champagne Series. In each Division there must be one boat to count as qualifier for Commodore or Champagne, two boats to count as a race, three or 4 boats to have first place trophy, five boats to have second place trophy.

For non-Pursuit races finishes will be calculated using PHRF time-on-distance YRA of LIS PHRF certificate or in the case of no certificate, rating will be assigned by Club Measurer from YRA of LIS PHRF list of similar yachts. Club Measurer will confirm ratings within 10 days of published 2024 scratch sheet and Pursuit Charts. Pursuit races will have their start times as published by the Regatta Committee. Finishes will be in order of finish.

Champagne races will be scored as a series using Percentage Cox-Sprague. Boats must have started in at least 50% of the races sailed to qualify.

The final scores of the Champagne Series, Appleby, Meacham, Labor Day Race (club boats only scores), Fall Classic, Moonlight and Dr Ruth will be used to determine the Commodore's Trophy using percentage (3 decimal places using Microsoft Excel) Cox-Sprague. Boats must sail in at least 50% of these events (Champagne series counts as one event and will be included for all). In the event of a tie, final standings for the tied yachts in the Champagne Series will determine the winner.

16 SAFETY REGULATIONS

Boats are required to check in with the Race Committee before the start.

Boats withdrawing shall notify the Race Committee in person or via Radio CH 72 as soon as possible.

17 RADIO COMMUNICATION

Boats shall monitor VHF Radio CH 72 to hear broadcasts from the Race Committee. Except for an emergency or to hail the Race Committee to indicate a boat is retiring from the race, boats shall not otherwise use the radio while racing. This restriction also applies to mobile telephones, except for use of GPS Apps.

As a courtesy, the Race Committee may broadcast via VHF radio CH 72 postponements, cancellations or time of warning after a postponement or preparatory after a General Recall. Failure to do so is not grounds for redress. For Pursuit Races the Race Committee may broadcast a course change prior to the warning.

18 PRIZES

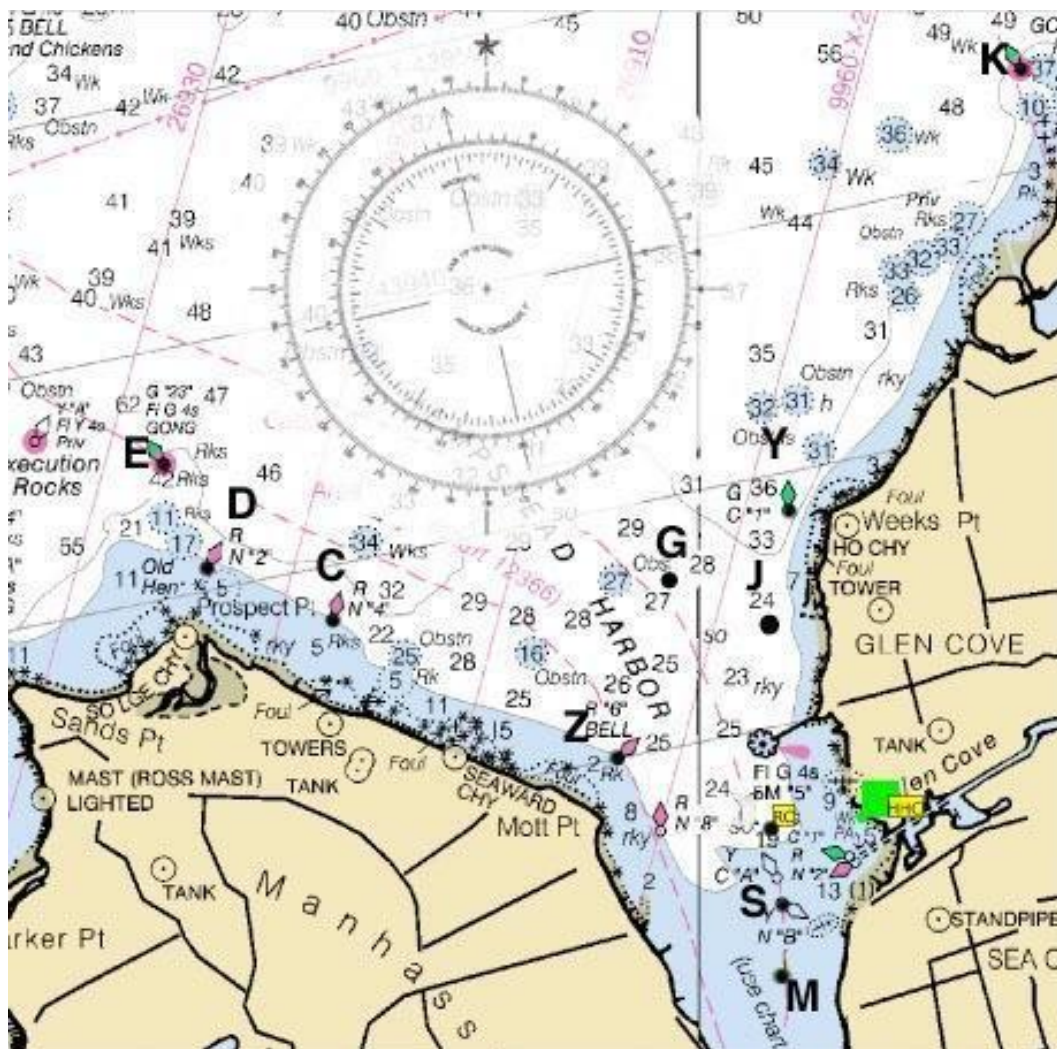
Prizes will be awarded as determined by the Regatta Chairmen in accordance with Section 11.02 of the HHC Bylaws.

19 DISCLAIMER OF LIABILITY

DISCLAIMER OF LIABILITY In consideration of the sponsorship of this regatta and the acceptance of the participant's entry by Hempstead Harbour Club, each participant hereby agrees that the safety of his/her yacht and crew, and the decision whether to start or continue to race, is his/her responsibility and not the responsibility of the Sponsor. Each participant hereby waives all claims which he/she may have against the Sponsor and their directors, officers, members, committees, employees or volunteers arising out of or in any way connected with his/her participation in this event or any related activity undertaken by any of them in conjunction with, prior to, during or after this event. Each participant represents to the Sponsor that he/she carries adequate property and liability insurance, that he/she will inform his/her insurance carrier of the foregoing waiver and that he/she will inform all crew members of their responsibilities for safety. Each participant further agrees that the foregoing waiver is binding on his/her heirs, representatives, successors and assigns. Competitors participate in these races entirely at their own risk. Competitors participate in these races entirely at their own risk. See rule 3, Decision to Race. The organizing authority will not accept any liability for material damage or personal injury or death sustained in conjunction with or prior to, during, or after these races.

20 INSURANCE

Each participating boat shall be insured with valid third-party liability insurance with appropriate coverage.



Attachment A: RACING MARKS

- C Prospect Point RN 4, red nun
- D Hempstead Harbour RN 2, red nun
- E Prospect Point G 23; FL G 4s, green Gong
- G HHC Fixed mark, north of Glen Cove Breakwater, approximately midway between Z and Y;
N 040° 52.347, W 073° 40.215'
- J HHC Fixed mark, between Y and end of Glen Cove Breakwater;
N 040° 52.191, W 073° 39.626'
- K Matinecock Point Shoal G 21, FL G 4s, green Gong
- M HHC Fixed mark, South of Creek channel entrance, towards the gravel barge moorings;
N 040° 50.735', W 073° 39.508'
- S Hempstead Harbor Anchorage Yellow Can B, southerly yellow can
- X RC start/finish line, if used as a gate in the middle of course
- Y Hempstead Harbor GC 1, green Can
- Z Mott Point R6, red Bell

